

CRAYFISH

This is a series of photos of 3 species of crayfish commonly found in Britain with notes on the diagnostic features. Although not a complete key to all crayfish you may come across, this should make it possible to identify these species:

Native White Clawed Crayfish

Signal Crayfish

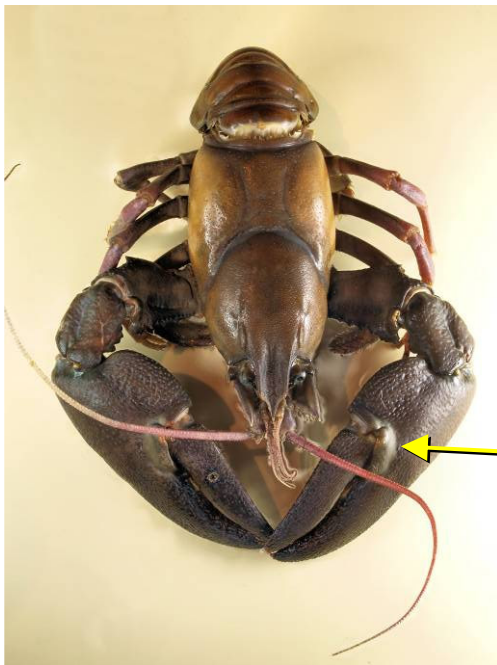
Turkish Crayfish





WHITE CLAWED CRAYFISH

Body is relatively smooth
apart from any spines.
Claws are smaller relative to
body size & are rough on the
top.
Undersides of claws are
lighter than the top (hence
white clawed).



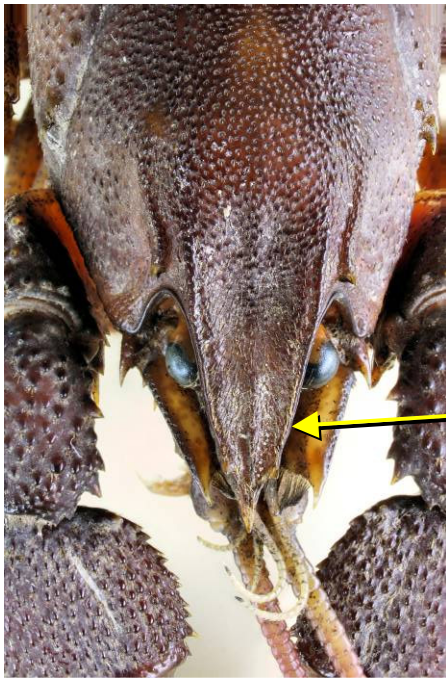
SIGNAL CRAYFISH

Body is smooth .
Claws are large relative to
body size and very strong.
Claws are smooth on the top,
the undersides are red.
There is a prominent white
or bluish patch on each claw
at the top of the finger joint -
the 'signal' patch.



TURKISH CRAYFISH

Body is rough at the front,
behind the head.
Claws are long and slender
relative to body size and
have a rough surface.



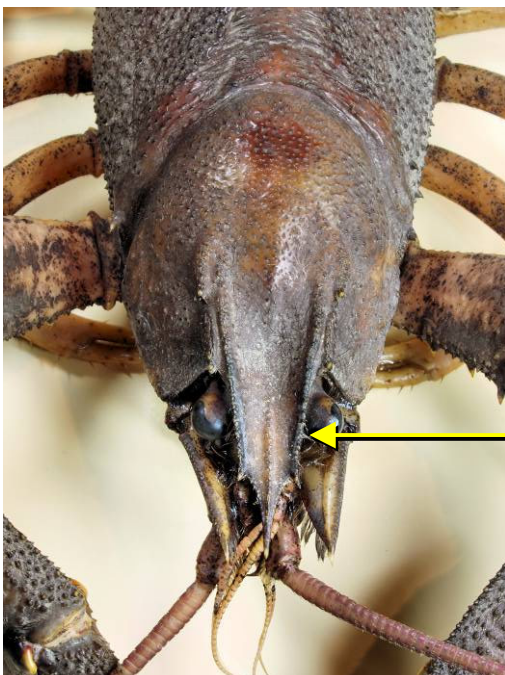
WHITE CLAWED
CRAYFISH

Sides of the rostrum are smooth and converging towards the base of the small triangular apex.



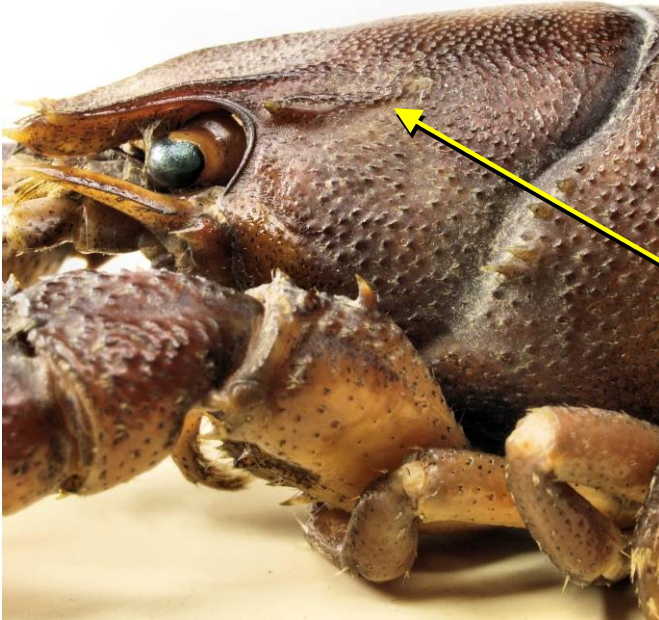
SIGNAL CRAYFISH

Sides of the rostrum are smooth and more parallel towards the small triangular apex.



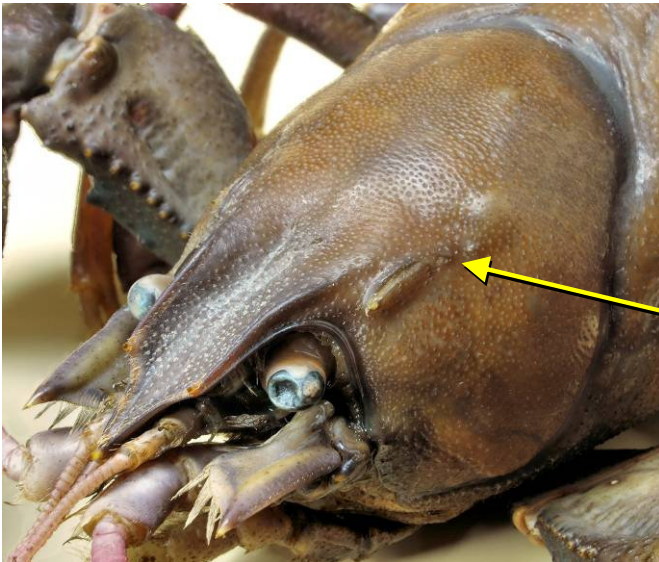
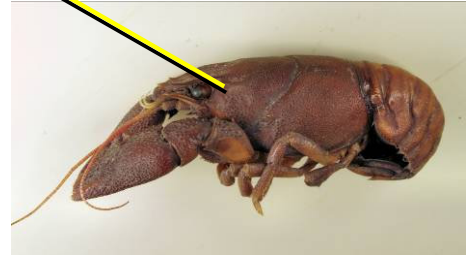
TURKISH CRAYFISH

Sides of the rostrum are rough and toothed and more parallel towards the small triangular apex.



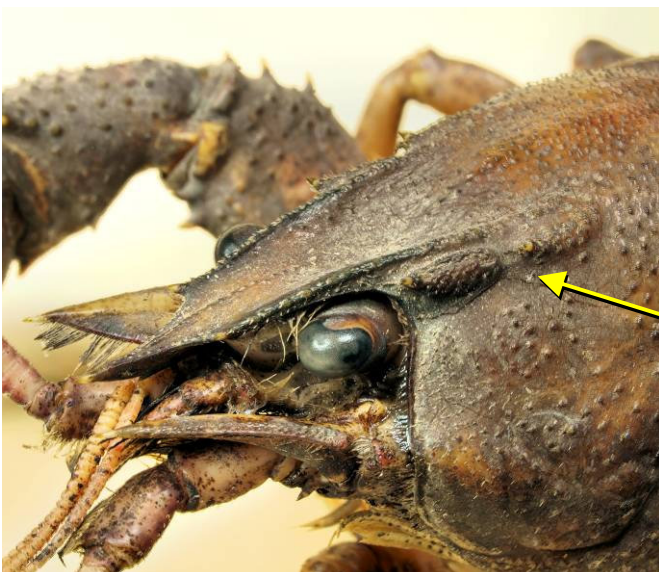
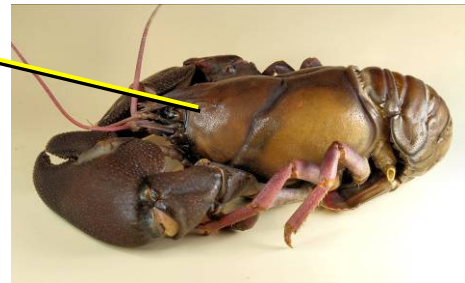
WHITE CLAWED CRAYFISH

On each side there is one post orbital ridge, behind the eye, with a spine at the end.



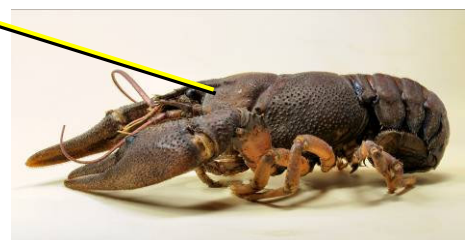
SIGNAL CRAYFISH

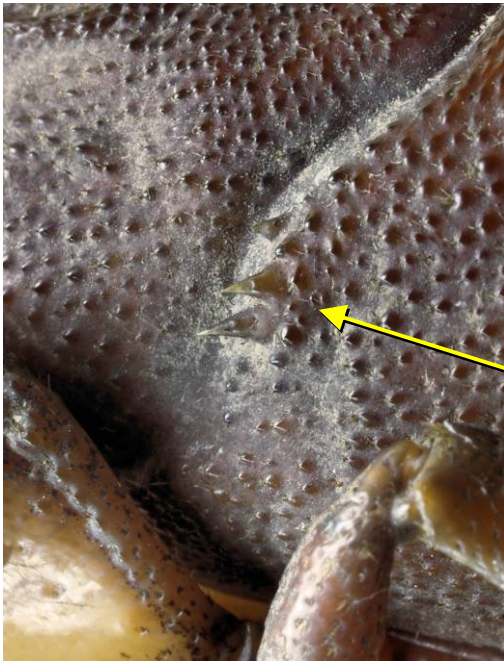
On each side there are two post orbital ridges. Each may have a spine at the end but the rear ridge may be small, more like a bump.



TURKISH CRAYFISH

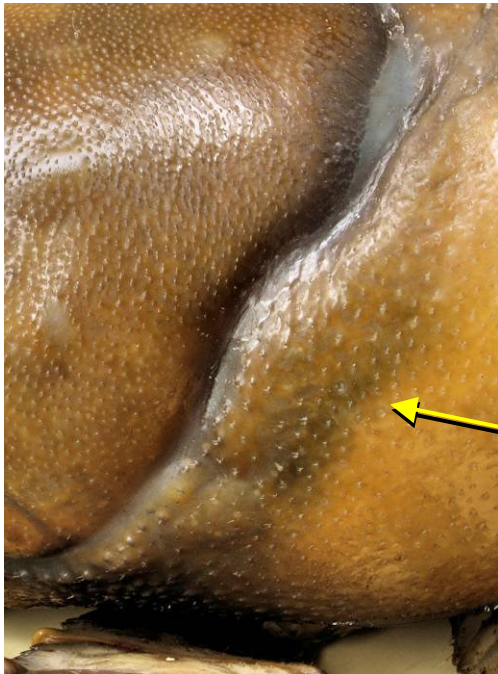
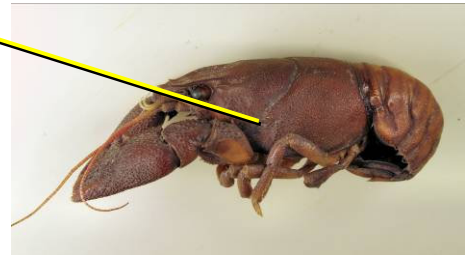
On each side there are two post orbital ridges. One spine on front ridge, the rear ridge with more than one.





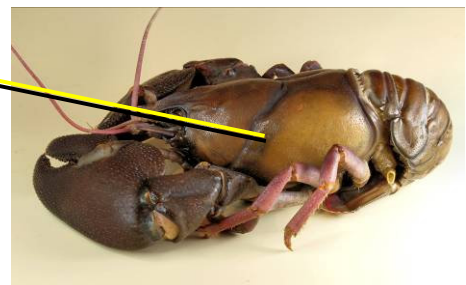
WHITE CLAWED CRAYFISH

Prominent sharp spines on the shoulders of the thorax, behind the cervical groove.



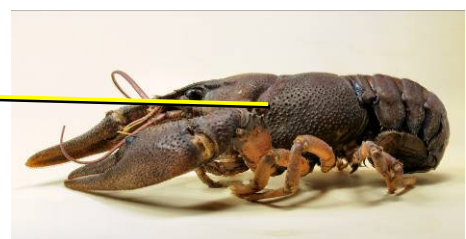
SIGNAL CRAYFISH

Smooth surface, with no spines, on the shoulders of the thorax, behind the cervical groove.



TURKISH CRAYFISH

Sides of the shoulders of the thorax, behind the cervical groove are covered with spine like projections.



Two photos of each of the three crayfish species, can you identify them?

